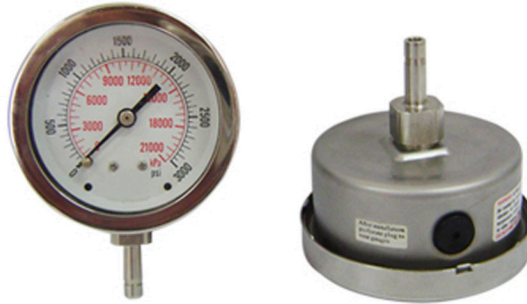


Applications:

Specifically designed to be utilized with tube fitting applications, easy for installation.



Specifications:

■ Dial	2.5"(63mm)
■ Case	304 stainless steel
■ Ring	304 stainless steel
■ Lens	Polycarbonate
■ Connection	1/4" Tube stub, 316L stainless steel
■ Fill Fluid	Glycerin
■ Ambient/Process Temperature	-40F to 150F (-40C to 65C) dry, -4F to 150F (-20C to 65C) filled
■ Accuracy	+/- 1.6%

Case Material: AISI 304 Stainless Steel
 Lens Material: Polycarbonate
 Ring: 304 Stainless Steel, Bayonet Mount
 Socket: AISI 316 Stainless Steel
 Tube: AISI 316 Stainless Steel
 Accuracy: ±1.6%
 Ambient Temperature Limits: -14°F to 158°F (-25°C to 70°C)
 Process Temperature Limits: -14°F to 158°F (-25°C to 70°C)
 Enclosure Rating: IP66

